



Light Efficient Design

RemPhos Solera C-Flex breezeEV

SALES & MARKETING MATERIALS



LIGHTING ON TARGET



FREE TO SHINE

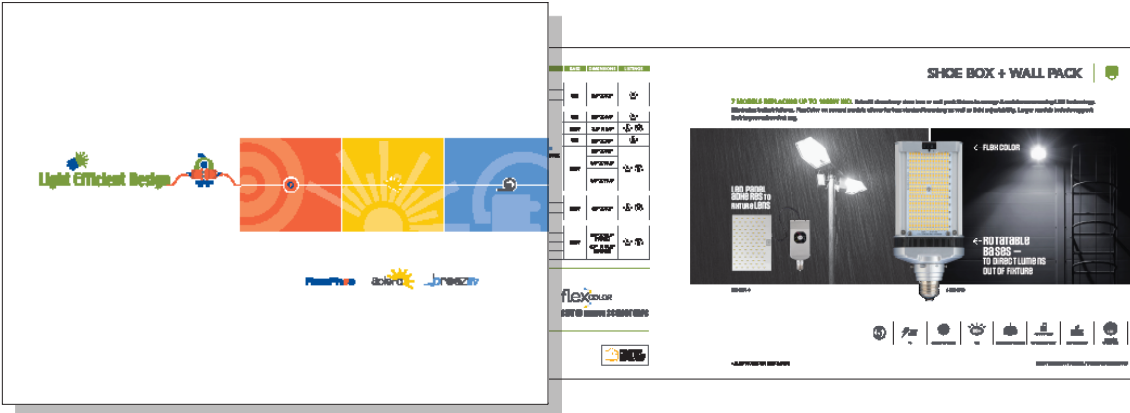


UNDER CONTROL



SMART • SIMPLE • CHARGING

COMPANY CATALOG
11.5"X8.5" / 68 PAGES



All the products from Light Efficient Design, RemPhos, Solera & breezeEV in one place.

SUPERFLEX SELL SHEET
8.5"X11" / 2 SIDES

MODEL NUMBER	WATTAGE	CEC	LUMENS	BASE	CERTIFICATION
LED-B002P35-A	15W REPLACING 150W	Fluorescent	1650 1400	E26	LED, ENEC, IESNA
LED-B002P35-A	15W REPLACING 150W	Fluorescent	1650 1400	E26	LED, ENEC, IESNA
LED-B002P35-A	15W REPLACING 150W	Fluorescent	2400 2400	E26	LED, ENEC, IESNA
LED-B002P35-A	15W REPLACING 150W	Fluorescent	2400 2400	E26	LED, ENEC, IESNA
LED-B002P35-A	15W REPLACING 150W	Fluorescent	3750 3400	E26	LED, ENEC, IESNA
LED-B002P35-A	15W REPLACING 150W	Fluorescent	3750 3400	E26	LED, ENEC, IESNA
LED-B002P35-GT-PW	15W REPLACING 150W	Fluorescent	1640 1600	E26	LED, ENEC, IESNA
LED-B002P35-GT-PW	15W REPLACING 150W	Fluorescent	1640 1600	E26	LED, ENEC, IESNA
LED-B002P35-GT-PW	15W REPLACING 150W	Fluorescent	1640 1600	E26	LED, ENEC, IESNA
LED-B002P35-GT-PW	15W REPLACING 150W	Fluorescent	1640 1600	E26	LED, ENEC, IESNA

PRODUCT BROCHURE
FOLDS TO 3.5"X8.5" / 14 PANELS

Features the most popular product offerings from Light Efficient Design as well as our other brands RemPhos, Solera & LumiCleanse.

LBI PRO BROCHURE
FOLDS TO 3.5"X8.5" / 4 PANELS

LBI PRO
THE LINEAR TRANSFORMER

Use as a retrofit kit or fixture

Light Efficient Design
RemPhos

For more information visit led-llc.com/led

THE LINEAR TRANSFORMER

connect up to 40 LBI lengths from one power feed

flexiCONTROL
color with advanced beam or no controls

flexiCOLOR
3 color temperatures

flexiMOUNT
3 variations

CONNECTORS & CONTROLS

RECESSED POWER KIT
The recessed power kit allows the LBI to be installed in a recessed ceiling. The LBI must be kept 6" from the ceiling. Linking Cables or Seamless Connectors, both available in multiple lengths, are required for connecting power cables.

LINKING CABLES
Links LBI's together in a fixture, around corners and more. Available in 2', 3' or 4'.

SEAMLESS CONNECTORS
Connect LBI together resulting in a seamless run of lighting.

OCC SENSOR KIT
To-Led, remote programmable high frequency motion and daylight sensor designed to easily integrate with the LBI bars.

EMERGENCY DRIVER (EMG-4 SERIES)
Emergency solution for LBI. It allows the LBI to be used for normal and emergency operation.

4.7IN SPACER CONNECTOR
Use the Spacer Connector to bring the length of the bar system to standard dimension.

CORD WITH PLUG & ON/OFF SWITCH
Available in 2' or 3'.

MOUNTING ACCESSORIES

SURFACE MOUNT MAGNETIC CLIP
The most universal method for attaching the LBI to a wall, ceiling, or fixture. **NOTE:** In select recessed applications, clip is not used.

SUSPENDED IN-LINE BRACKET KIT
Flatten over the junction of 2 LBI to keep them straight in-line and provides mounting points for common suspension methods.

UP/DOWN CLIP
Use the Up/Down clip with our suspended in-line kit to slip a shorter LBI to provide up-light.

45 DEGREE BRACKET KIT
Holds the LBI at 45 degrees to better distribute the light in the desired direction.

T-Bar CLIP
The fastest way to mount a light bar to a T-bar grid ceiling. Works with standard 15/16" grid only.

REMPHOS BASE BROCHURE
FOLDS TO 3.5"X8.5" / 6 PANELS

RemPhos
BASE

Features & reliability you expect, at an unexpected price.

Light Efficient Design

RP-LBI-6 LED BAR KIT INTERNAL DRIVER

INCOMING POWER KIT
42.2IN
RP-LBI-6-IP

Connect multiple bars off one power feed
Link up to 40 units in line with Linking Cables or create a seamless run of light w/ Seamless Connectors
Flux between 40°-15°/18° sockets without removal
25W | 4000K | 3600 LUMENS
— also listed as a FIXTURE —

RP-CK CIRCULAR DRUM RETROFIT

4000/1000/1500 | 3000K/3500K/4000K | 4000/1000/1500 LUMENS

attributes at a glance

	LBI	CK	LIB	LS	LD	UD
flexiCONTROL	•	•	•	•	•	•
flexiCOLOR	•	•	•	•	•	•
flexiMOUNT	•	•	•	•	•	•
LINKING CABLES	•	•	•	•	•	•
SEAMLESS CONNECTORS	•	•	•	•	•	•
OCC SENSOR KIT	•	•	•	•	•	•
EMERGENCY DRIVER	•	•	•	•	•	•
4.7IN SPACER CONNECTOR	•	•	•	•	•	•
LBI JUNCTION BOX	•	•	•	•	•	•
CORD WITH PLUG & ON/OFF SWITCH	•	•	•	•	•	•
90 DEGREE INCOMING POWER CABLE	•	•	•	•	•	•
SURFACE MOUNT MAGNETIC CLIP	•	•	•	•	•	•
SUSPENDED IN-LINE BRACKET KIT	•	•	•	•	•	•
UP/DOWN CLIP	•	•	•	•	•	•
45 DEGREE BRACKET KIT	•	•	•	•	•	•
T-BAR CLIP	•	•	•	•	•	•

Light Efficient Design 847.380.3540 • led-llc.com

LBI VERSATILITY FLYER
8.5"X11" / 2 SIDES

Light Efficient Design
RemPhos

LBI Versatility (common applications)

APPLICATIONS

- DECORATIVE PENDENT MOUNT FIXTURES**
Office Space
- CONTINUOUS RUN**
Warehouse Space
- COVE LIGHTING**
Hospitality
- COOLERS**
Grocery or Convenience Stores

INCLUDED WITH KIT

- Incoming Power Cable - Digital
- Seamless Connector & Accessory Hardware Assortment

CONNECTORS & CONTROLS

- LINKING CABLES**
RP-LBI-6-250-2
RP-LBI-6-300-2
RP-LBI-6-350-2
RP-LBI-6-400-2
RP-LBI-6-450-2
RP-LBI-6-500-2
- SEAMLESS CONNECTOR**
RP-LBI-6-SC-1P
RP-LBI-6-SC-2P
- OCC SENSOR KIT**
RP-LBI-6-OS-1P
RP-LBI-6-OS-2P
- EMERGENCY DRIVER (EMG-4 SERIES)**
RP-LBI-6-EMG-4
- 4.7IN SPACER CONNECTOR**
RP-LBI-6-4.7IN-SC
- LBI JUNCTION BOX**
RP-LBI-6-1-10A
- CORD WITH PLUG & ON/OFF SWITCH**
RP-LBI-6-IP-250-2
RP-LBI-6-IP-300-2
RP-LBI-6-IP-350-2
RP-LBI-6-IP-400-2
RP-LBI-6-IP-450-2
RP-LBI-6-IP-500-2
- 90 DEGREE INCOMING POWER CABLE**
RP-LBI-6-IP-90-250-2

MOUNTING ACCESSORIES

- SURFACE MOUNT MAGNETIC CLIP**
RP-LBI-6-MC
- SUSPENDED IN-LINE BRACKET KIT**
RP-LBI-6-IB-1P (12 PACK ONLY)
- UP/DOWN CLIP**
RP-LBI-6-UD-1P (12 PACK ONLY)
- 45 DEGREE BRACKET KIT**
RP-LBI-6-45-1P
- T-BAR CLIP**
RP-LBI-6-TB-1P (12 PACK ONLY)

Light Efficient Design 847.380.3540 • led-llc.com

Solera
SOLAR LIGHTING™

best practices & guidelines

Light Efficient Design

SOLAR BEST PRACTICES GUIDE

FOLDS TO 8.5"X11" / 4 PAGES

Best Practices & Guidelines

Installation Location

- ✓ Avoid areas of direct sunlight, unshaded by trees or buildings.
- ✗ Location is shaded, unshaded by trees or buildings.
- ✓ Mount location with predominant surface is maximum performance.
- ✗ Collaboration with contractor about mounting data is maximum performance.

Panel Angle

- ✓ Angle your panel to the approximate direction latitude you live in in the month.
- ✗ DON'T keep your panel flat, unless you are near the equator.

Light Efficient Design

Solera
SOLAR LIGHTING™

FREE TO SHINE

welcome to a solar city

Light Efficient Design

SOLAR CITY BROCHURE

FOLDS TO 8.5"X11" / 6 PANELS

- WALL MOUNT LIGHT (SP-SOL) COMPARED TO WALL MOUNT LIGHT
- AREA LIGHT (AP-SOL) COMPARED TO AREA LIGHT
- FLOOR LIGHT (FP-SOL) COMPARED TO FLOOR LIGHT
- POST TOP FIXTURE (PT-SOL) COMPARED TO POST TOP FIXTURE
- OVERHEAD LIGHT (OP-SOL) COMPARED TO OVERHEAD LIGHT
- RECURVING FIXTURE (RF-SOL) COMPARED TO RECURVING FIXTURE
- REEL LIGHT (RL-SOL) COMPARED TO REEL LIGHT

Light Efficient Design 847.380.3540 • solera-solar.com

SOLAR APPLICATION FLYER W/ PHOTOS*
8.5"X11" / 2 SIDES

Solera SOLAR LIGHTING™ FREE TO SHINE

100% POWERED BY THE SUN

SOLAR APPLICATION PHOTOS

Go completely off-grid with our solar light fixtures. All-in-one designs, solar panel and battery are built into the LED fixture.

- SOLAR FLOOR LIGHT - 2000 LUMENS
- SOLAR AREA LIGHT - 2000 LUMENS
- SOLAR WALL MOUNT LIGHT - 400 LUMENS
- SOLAR WALL PACK - 700 LUMENS
- SOLAR WALL MOUNT LIGHT - 400 LUMENS
- SOLAR REEL LIGHT - 200 LUMENS
- SOLAR AREA LIGHT - 2000 LUMENS
- SOLAR WALL PACK - 700 LUMENS
- SOLAR FLOOR LIGHT - 2000 LUMENS

Light Efficient Design 847.380.3540 • solera-solar.com

SOLAR PRODUCT ATTRIBUTES LIST
8.5"X11"

Solera SOLAR LIGHTING™ FREE TO SHINE

SOLAR ATTRIBUTE LIST

SOLAR LIGHTS	FP-SOL	OP-SOL	AP-SOL	PT-SOL	RF-SOL	RL-SOL	SP-SOL	WP-SOL
Motion Sensor	Yes	No	Yes	Yes	No	No	Yes	Yes
Photoeye	Yes	Yes	Yes	Yes	Yes	Yes	Yes	Yes
# of modes	3	3	3	3	3	3	3	3
Battery	LiFePO4	Li-Ion	Li-Ion	Li-Ion	Li-Ion	Li-Ion	LiFePO4	Li-Ion
# of Cycles	3000	1500	1500	1500	1500	1500	2000	2000
Remote	Indirect, Optional	No	No	No	No	No	Indirect, Required	Indirect, Required
Solar Panel	Adjustable	Fixed	Fixed	Fixed	Fixed	Fixed	Adjustable	Adjustable
Battery Display	No	Yes	No	No	No	Yes	No	No
University (Texas)	3	3	3	3	3	3	5	5
CCF	46	46	46	46	46	46	46	46
Operating / Discharging Temp	-13° - 113°	-13° - 149°	-13° - 149°	-13° - 149°	-13° - 149°	-13° - 149°	-13° - 149°	-13° - 122°
Charging Temperature	32° - 113°	32° - 149°	32° - 149°	32° - 149°	32° - 113°	32° - 113°	32° - 149°	32° - 149°
Rechargeable Battery	Yes	No	No	No	No	Yes	No	Yes
Initial Power-On Location	Remote	On Fixture	On Fixture	On Fixture	On Fixture	On Fixture	On Fixture	Remote

Light Efficient Design 847.380.3540 • solera-solar.com

* Also available laminated w/ grommet and ring clip for attaching to gondola.

PRODUCT DEMO DISPLAYS

PRODUCT(S) ORDERED SEPARATELY



SCREW-IN RETROFIT W/FLEXCOLOR
8"X10"X4"
LED-9800



SCREW-IN RETROFIT HORIZONTAL & BASE-DOWN SOCKET POSITIONS
6"X10"X16"
LED-9900



PIN-BASE RETROFITS
16"X5"X10"
LED-9750

PRODUCT(S) INCLUDED W/ DISPLAY



LBI (LINEAR BARKIT)
10"X9"X22"
RP-LBI-G1-1F-2X-DISPLAY



SOLAR WALL PACK
9"X9"X16"
SL-9100

RECOMMENDED PRODUCTS
8038E-345

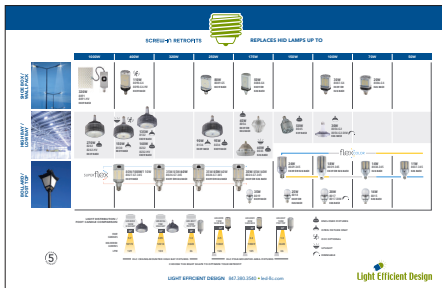
RECOMMENDED PRODUCTS
8038 + 8037

RECOMMENDED PRODUCTS
7342 + 7318 + 7320 + 7324

* All displays come wired with plug and on/off switch(s). ** Solar Wall Pack does NOT need to charge.

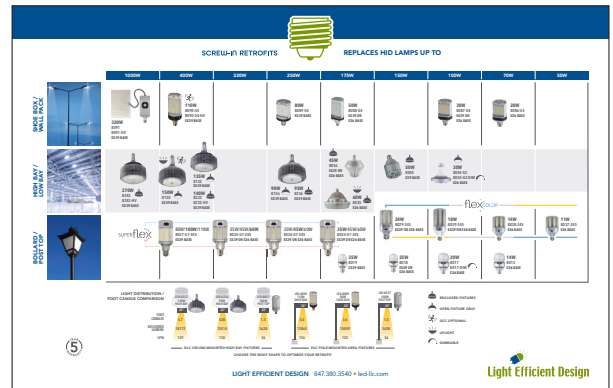
SELECTOR GUIDES / COUNTER MATS

SELECTOR GUIDE*
17"X11"



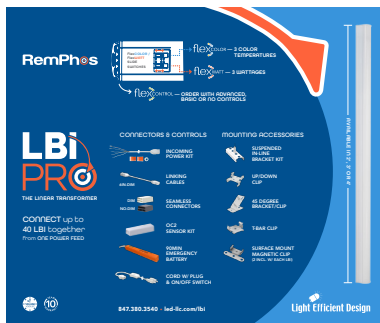
* Also available w/ grommet and ring clip for attaching to gondola.

COUNTER MAT
24"X17"



MOUSEPADS

LBI MOUSEPAD
10"X8"



PORTABLE PRODUCT GONDOLA — 2' & 3'

2' (24"x14"x78") LED-9902

3' (36"x14"x78") LED-9903

* Products ordered separately.



GONDOLA HEADER CARDS

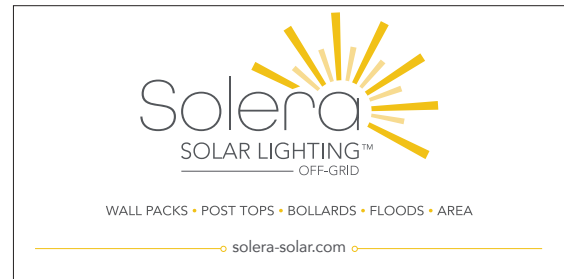
HEADER CARD OPTIONS DEPENDING ON PRODUCT ASSORTMENT

LIGHT EFFICIENT DESIGN



24"X12"

SOLERA SOLAR



24"X12"

WALL MOUNTED HEADER CARDS



48"X16"



48"X8"



48"X8"

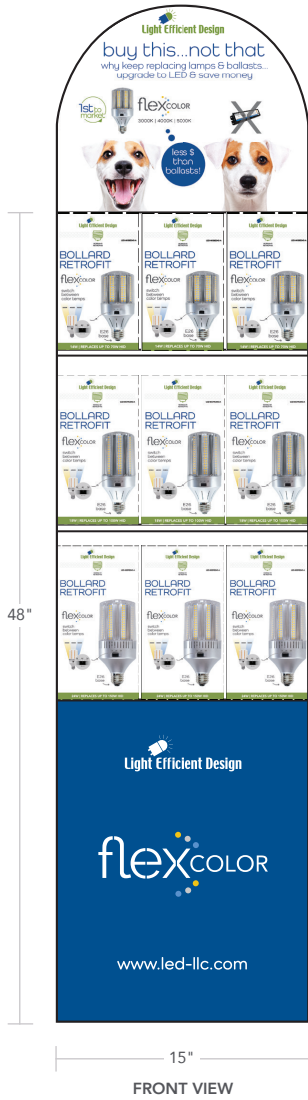


48"X8"

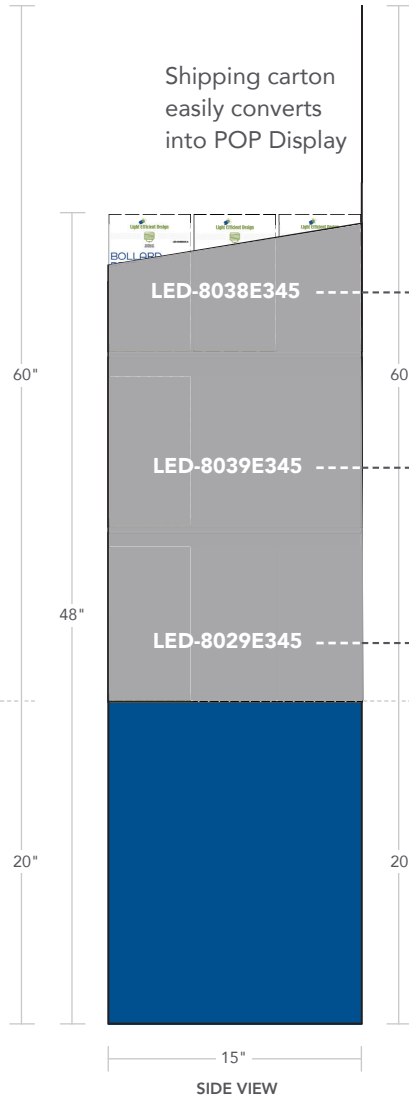
flexCOLOR BOLLARDS CORRUGATE SHIPPERS
15"X15"X60" (EXPANDED)

LED-9345

* Products ordered separately.



FRONT VIEW



SIDE VIEW

WHAT FITS INSIDE?

27 PIECES OF ANY COMBINATION BELOW

- LED-8037E345-A
- LED-8038E345-A
- LED-8039E345-A
- LED-8039M345-A
- LED-8029E345-A
- LED-8029M345-A



← SUGGESTED COMBINATION

SCREW-IN RETROFITS — 2'X4'

Light Efficient Design

RemPhos Solera DreezEV

flexCOLOR SCREW-IN RETROFITS SUPERflex

SCREW-IN RETROFITS PIN-BASE RETROFITS WORK LIGHTS RETROFIT KITS FIXTURES SOLAR LIGHTS VEHICLE CHARGERS

led-llc.com

FLEXCOLOR BOLLARDS — 2'X4'

Light Efficient Design

3 colors in 1 – it's a beautiful thing...

1st to market

switch between 3 color temps

flexCOLOR
3000K | 4000K | 5000K

for inventory management

led-llc.com

SOLERA SOLAR — 2'X4'

FREE TO SHINE.

Solera SOLAR LIGHTING

HYBRID 365
COMBINING SOLAR & GRID POWER

Light Efficient Design

OFF-GRID
100% POWERED BY THE SUN

solera-solar.com

HANGING GROMMETS INCLUDED

LBI DEMO KIT



CARABINER CLIP

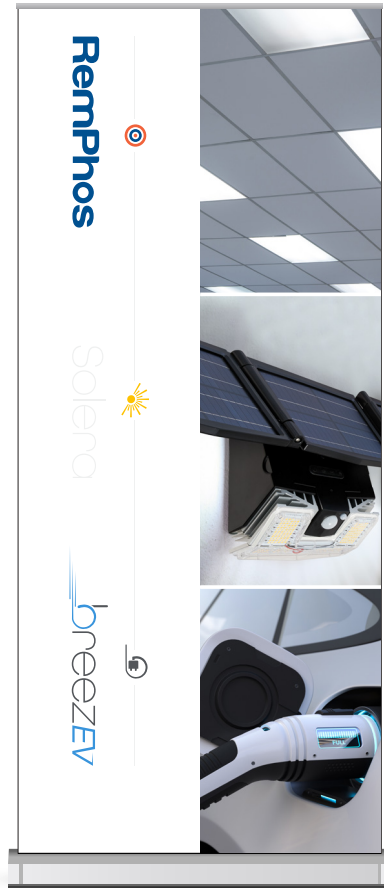


POUCHES

WHAT'S INCLUDED?

- (1) 2FT LBI
- (1) POWER CORD W/PLUG
- (1) 12" LINKING CABLE
- (1) OCCUPANCY SENSOR
- (2) SEAMLESS DIMMABLE CONNECTORS
- (1) INCOMING POWER KIT
- (2) MAGNETIC CLIPS
- (1) 45 DEGREE CLIP
- (2) UP/DOWN CLIPS
- (2) T-BAR CLIPS
- (1) SUSPENDED BRACKET

LIGHT EFFICIENT DESIGN
LED / REMPHOS / SOLERA / BREEZEV
33.5"X84"



NOTE Designs are updated frequently. Contact Cara at clichey@led-llc.com for what is currently available.

SOLERA SOLAR
OFF GRID
33.5" X84"

Solera
SOLAR LIGHTING™

OFF-GRID

- All-in-one design
- No trenching or wiring needed
- Long life battery

WALL PACK FLOOD LIGHT

POST TOP BOLLARD

Light Efficient Design
RemPhos
solera-solar.com

SOLERA SOLAR
OFF GRID / HYBRID
33.5" X84"

Solera
SOLAR LIGHTING™

OFF-GRID

POST TOP

- All-in-one design
- No trenching or wiring needed
- Wall pack, flood lights, bollards, & more available!

HYBRID 365

AREA LIGHT

Compares to 250W HID

Uses a combination of solar power & line voltage if needed

All-in-one design

Light Efficient Design
solera-solar.com

NOTE Designs are updated frequently. Contact Cara at clichey@led-llc.com for what is currently available.

breezEV
LOGO
33.5" x 84"

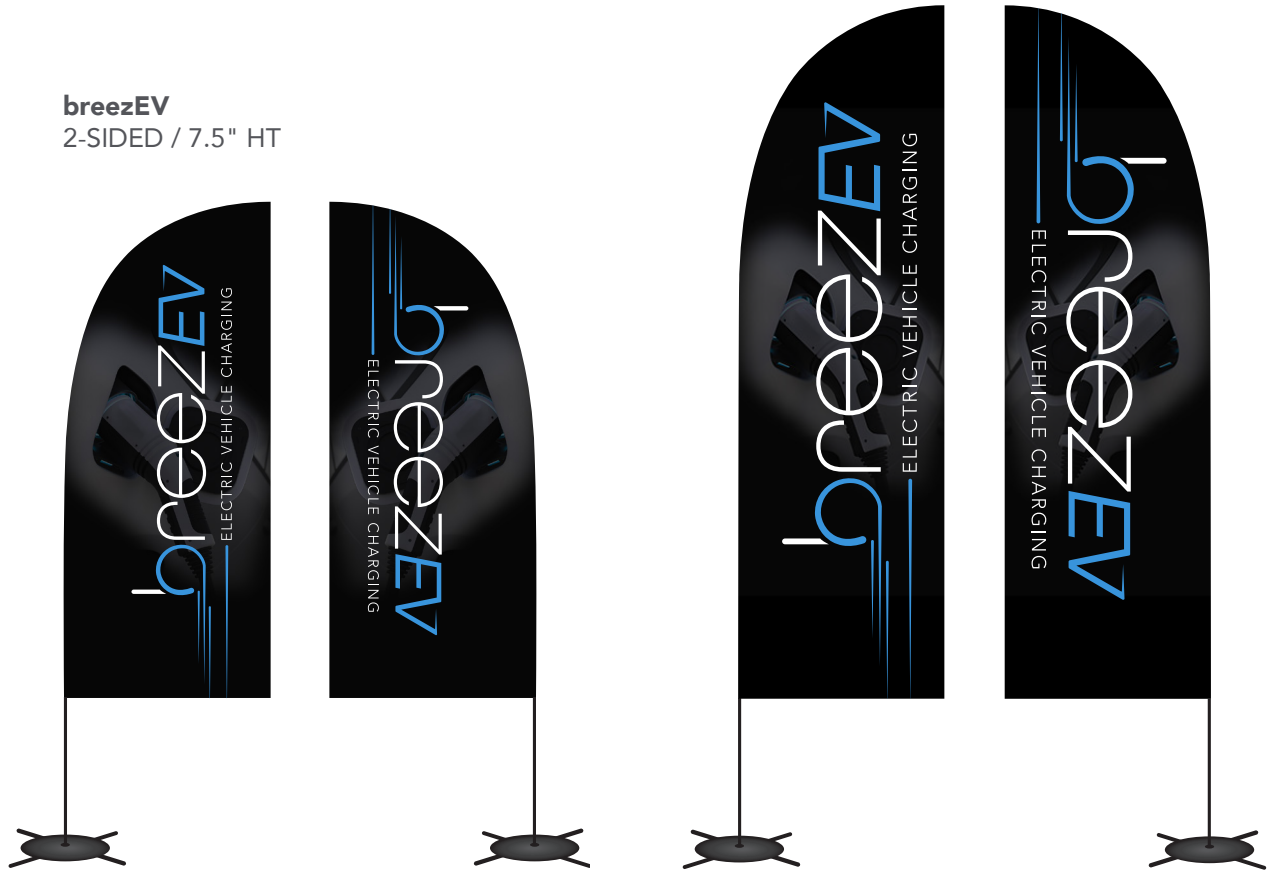


breezEV
FULL PRODUCT
33.5" x 84"

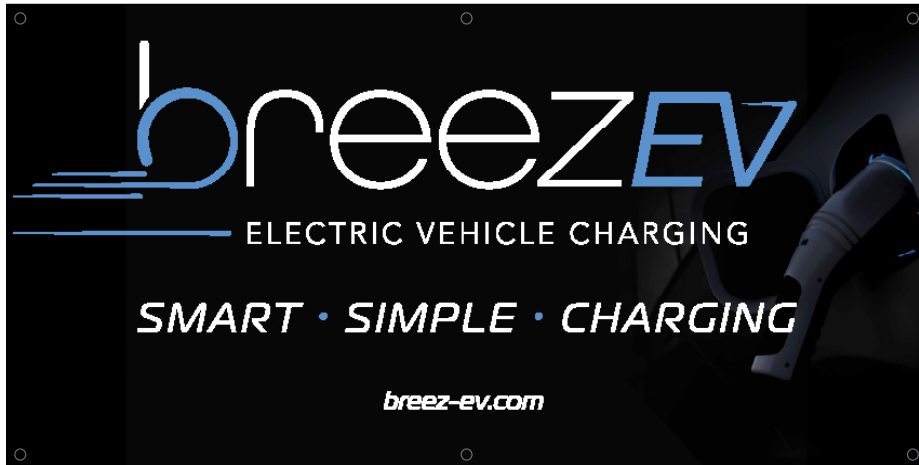


breezEV
2-SIDED / 10.5" HT

breezEV
2-SIDED / 7.5" HT



breezEV (A) — 2'X4'



breezEV (B) — 2'X4'



HANGING GROMMETS INCLUDED

TABLE RUNNER

breezEV
36" x 84"



POP DISPLAYS

**ACRYLIC
TABLETOP DISPLAY**



**FOAM-CORE
POP DISPLAY**



DIGITAL SIGNATURE

800 x 150 pixels



DIGITAL ADS

600 x 200 pixels



800 x 533 pixels



1030 x 388 pixels



COUNTER CARD

10" x 15"



breezeEV
ELECTRIC VEHICLE CHARGING

LEVEL 2
ELECTRIC VEHICLE
CHARGERS FOR
ANY COMMERCIAL
PROPERTY

SLEEK &
COMPACT
HOUSING

AVAILABLE IN
12, 18 OR 25 FT.
CABLE LENGTHS

COMES
WALL MOUNT
READY

DESIGNED
FOR INDOOR
& OUTDOOR
APPLICATIONS

RFID CARD
READER FOR
FASTER PAYMENTS

FLEXIBLE
MOUNTING
OPTIONS

UP TO 48A FOR
HIGH SPEED
CHARGING

OPTIONAL **emplus** CLOUD BASED COMMUNITY MANAGER & DRIVER APP

ALSO AVAILABLE IN THESE MOUNTING OPTIONS

SCAN FOR MORE INFORMATION
OR VISIT BREEZE.EV/COM

LIGHT EFFICIENT DESIGN 847.380.3540 • led4ic.com

MOUSEPADS

9.5" x 8"



LEVEL 2
CHARGERS FOR
COMMERCIAL PROPERTIES

INDOOR & OUTDOOR
APPLICATIONS

RFID CARD READER
FOR FASTER PAYMENTS

12, 18 OR 25 FT.
CABLE LENGTHS AVAILABLE

HIGH SPEED
UP TO 48A CHARGING

breezeEV

SMART • SIMPLE • CHARGING

breez-ev.com

BROCHURE

11.5" x 8.5"
8 PAGES



breezeEV
SMART • SIMPLE • CHARGING
breez-ev.com

breezeEV
by Light Efficient Design

ELECTRIC VEHICLE CHARGER MOUNTING OPTIONS

5148 / 1940 / 1948

LIGHT EFFICIENT DESIGN
REMPHOS / SOLERA / breezEV



breezEV
SMART • SIMPLE • CHARGING



SOLERA
FREE TO SHINE



C-FLEX
UNDER CONTROL





LIGHT EFFICIENT DESIGN

Corporate Headquarters • Cary, IL | Innovation & Manufacturing Center • Middleton, MA
847.380.3540 • led-llc.com | sales@led-llc.com